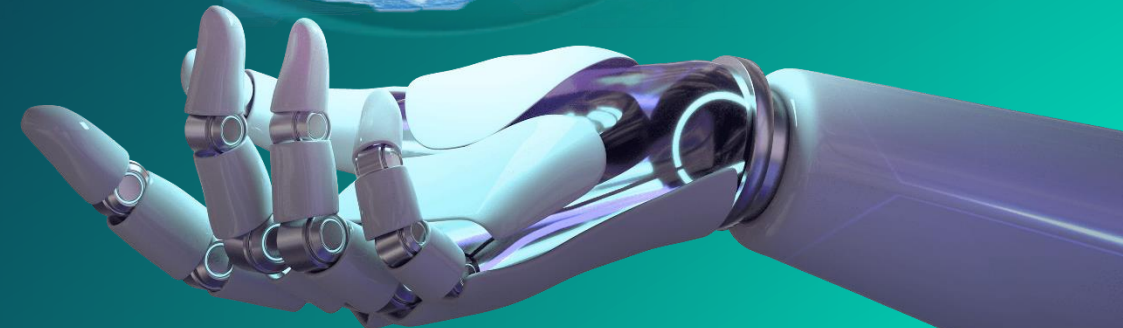




CPF's Sustainability Journey Passion towards Net-Zero



Charoen Pokphand Foods PLC (CPF)
January 2025

Table of Content

Environment Passion Towards 2030

Transitioning Towards Sustainable Economy	2
Environmental Sustainability: GHG Water Waste	3
Our Commitment in Achieving Environmentally Sustainable Value Chain in 2030	4
	5

Setting the Scene

Net-Zero SBT Targets	6
A Message From Our CEO	7
Our Scope	8
	9

Methodology

Our Global GHG Inventory	10
The Greenhouse Gas Protocol (GHG Protocol)	11
FLAG Guidance (Forest, Land and Agriculture Guidance)	12
Long-Term Roadmap to Net-Zero SBT	13
Reduced Emissions Evaluation	14
	15

4 Intelligences Strategies

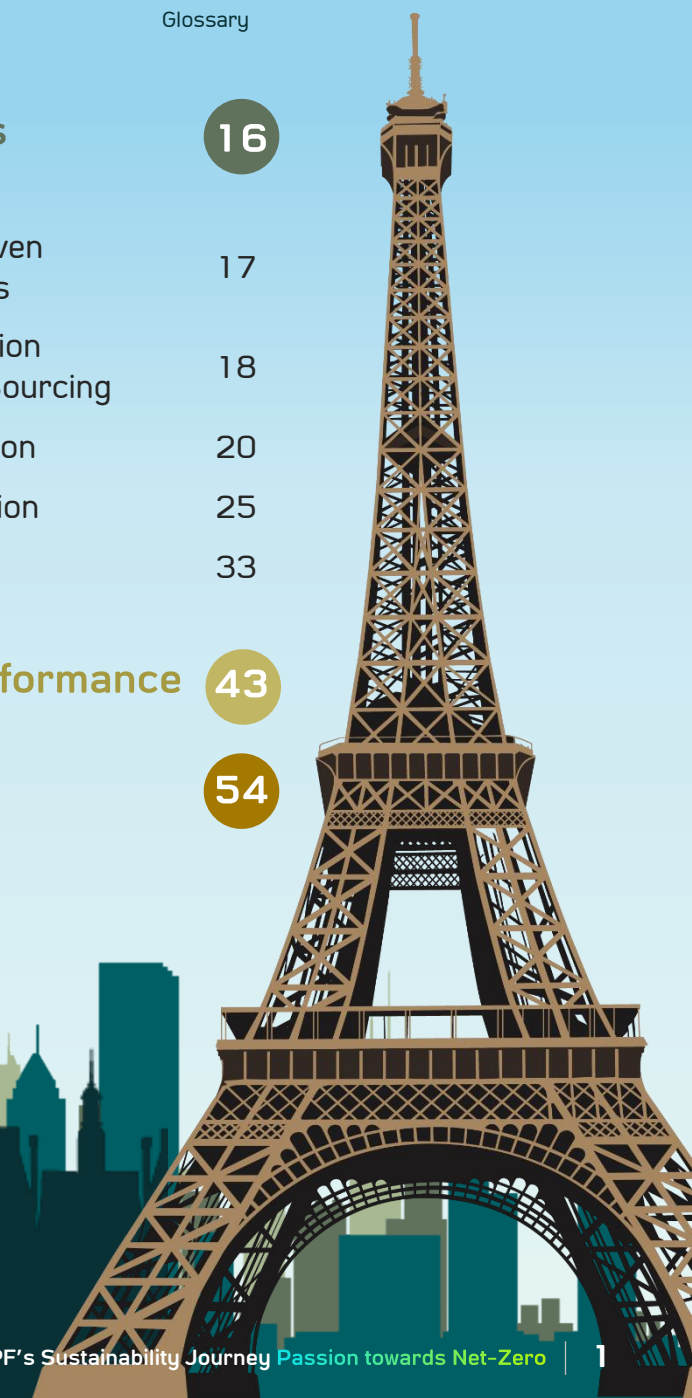
4 Intelligences-Driven Net Zero Strategies	16
C – Carbon Reduction from Sustainable Sourcing	17
P – Power Circulation	18
F – Future Generation	20
Net-Zero Network	25
	33

Measuring Performance

Glossary

43

54



Environment “Passion Towards 2030”

Transition towards Sustainable Business

Our vision is to achieve long-term business growth alongside sustainable and responsible management of natural resources and the environment. By utilizing world-class technology and digital system, we are able to reduce impacts on the society and the environment.



Environmental Sustainability

CPF are committed in conducting sustainable business; protecting the environment with the use of digital technologies, data management, and artificial intelligence to address environmental issues in three key areas:



GHG Emissions



Water



Waste

World-class technologies implemented by CPF

**Digital Systems
and Artificial
Intelligence**

Data Science

**Innovation and
Technology**

CPF is steadfast on **three industry-leading goals** built on our on-going journey to reduce the environmental impact:

Achieve Net-Zero Emissions

Near-term target for 2030

- Reduce GHG emissions from energy use by 42.0%
- Reduce GHG emissions from land use change and management by 30.3%

Long-term target for 2050

- Reduce GHG emissions from energy use by 90.0%
- Reduce GHG emissions from land use change and management by 72.0%

Plan for water risk

Develop a plan to manage the impacts of flooding, drought, and water scarcity in all high-risk areas, with a commitment to achieving zero liquid discharge at food processing plants. The pilot plant will be completed by 2025.

Move to zero waste to landfill

We embrace circular economy principles by maximizing the use of organic raw materials in production, transforming by-products into valuable resources, and eliminating single-use plastics across all CPF operations. Additionally, we are committed to achieving zero waste to landfill by 2030.

CPF is dedicated to achieve environmental sustainability across the value chain by 2050

with 5,000 million baht worth of investment.

SDG Goals Mapping



2 Feedmill

- Smart Feedmill
- Bunker Oil to Cleaner Fuel
- Zero Liquid Discharge
- Zero Waste to Landfill

1 Raw Material

- Traceability System
- Zero Deforestation Sourcing

3 Farm

- Environmentally Friendly Feed RE100
- Centralized Biomethane Hybrid Biogas
- No Land Use Change
- Zero Liquid Discharge
- Zero Waste to Landfill

4 Ready-to-eat Manufacturer

- Biomass Energy
- Solar Energy
- EV Transportation
- Green Building
- Smart Data
- Zero Liquid Discharge
- Zero Waste to Landfill

5 Clients and Consumers

- Sustainable Packaging
- Environmentally Friendly Feed
- Low-Carbon Products

GHG, Water, Waste

Setting the Scene



Roadmap to Net-Zero SBT





BUSINESS AMBITION FOR 1.5°C

A Message from Our CEO



Mr. Prasit Boondoungprasert

Chief Executive Officer
Charoen Pokphand Foods Public Company Limited

“ CPF commits to reach Net-Zero greenhouse gas emissions across the value chain by 2050. ”

GHG Reduction Target against Base Year 2020

Near-term Targets by 2030	42%	30.3%
	from energy usage	from land use change and management
Long-term Targets By 2050	90%	72%
	from energy usage	from land use change and management

Charoen Pokphand Foods is the first food processing company in the world

with near- and long-term FLAG SBT validated by the SBTi in an attempt to limit global warming to **1.5 °C***

*above pre-industrial levels

Our Scope

Charoen Pokphand Foods Public Company (CPF) operates agricultural and food industry in

14

 countries

America

USA



Europe

UK, Poland, Belgium, Türkiye, Russia



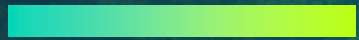
Asia

Thailand, China, Vietnam, India, Cambodia, The Philippines, Malaysia, Laos, Sri Lanka

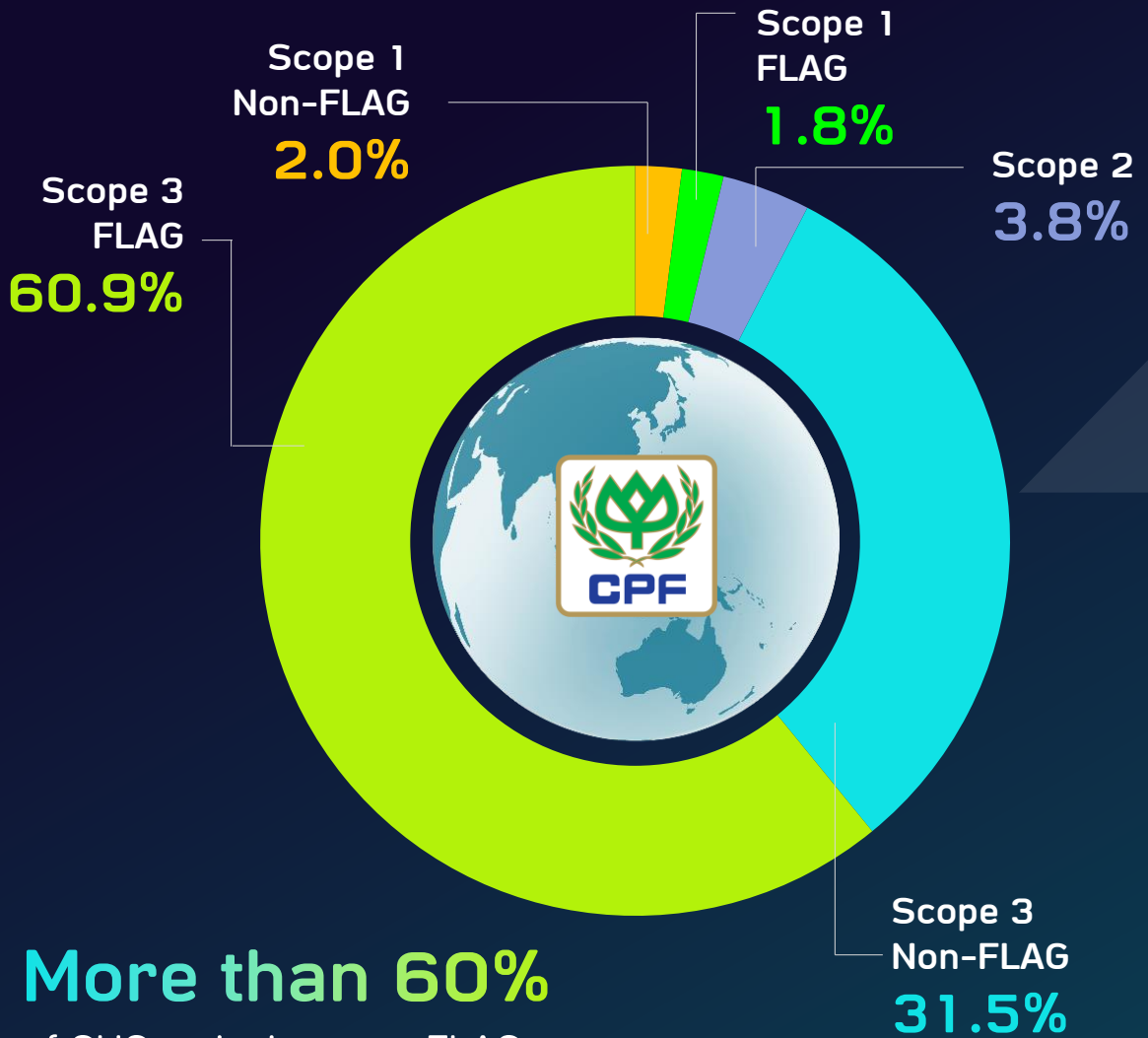


*Remark : Since 2024, the subsidiary in Poland has been restructured as a joint venture, therefore adjusting the scope and recalculating the base year.

Methodology



CPF's Global GHG Emissions



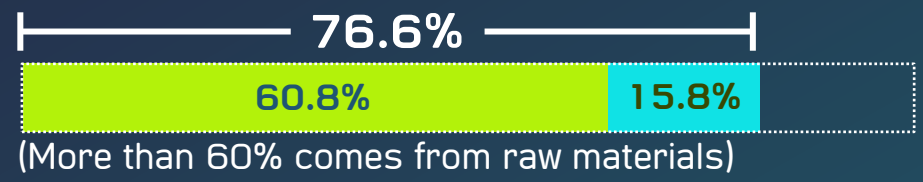
More than 60% of GHG emissions are FLAG

Scope 3 Breakdown

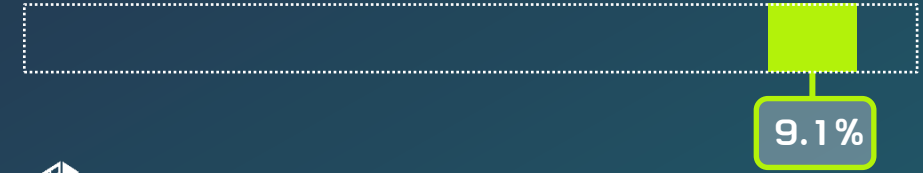
92.4%

● Scope 3

Purchased Goods and Services (PG&S)



Upstream Transportation and Distribution



The Remaining Scope



Remark :

● FLAG ● Non-FLAG

GHG Protocol and SBTi



Accounting
7 GHG emissions
and reporting
3 Scopes
of GHG emissions

Divided into

- Non-FLAG
- FLAG




Scope 3 Indirect

- Leased assets 
- Employees commuting 
- Business travel 
- Waste from operation 

Scope 1 Direct

- Company facilities & vehicles 
- Land use change (FLAG) 
- Livestock digestion and Manure management (FLAG) 

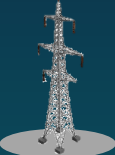
Scope 3 Indirect

- Transportation & distribution 
- Processing of sold products 
- Use of sold products (FLAG) 

Using
Forest, Land and Agriculture (FLAG)

Is SBTi's specific guidance for agricultural and food sector





Scope 2 Indirect

- Purchased electricity, steam and cooling 

3.1 83% of Scope 3

- Purchased goods & services (FLAG & Non-FLAG) 
- Capital goods 
- Fuel & Energy related 
- Transportation & distribution 

3.4 10% of Scope 3

- End-of-life treatment of sold products 
- Leased assets 
- Franchises 
- Investments 

Upstream activities

CFP

Downstream activities

FLAG Guidance

(Forest, Land and Agriculture Guidance)

Covers Scope 1, Scope 3.1: Purchased Goods and Services Emissions, and Scope 3.11: Use of sold products (FLAG)

Land Use Change

from forests to farms

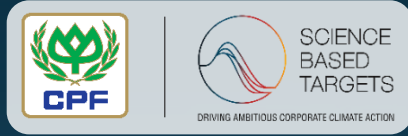


Land Management

from enteric fermentation, manure management and fertilization



Key Actions



2020 Base Year

2025



Zero Deforestation Sourcing

for corn, soybeans, palm oil, cassava of CPF own global operations, and paper of CPF Thailand operation



100 MW Solar PV

in Thailand's operations



Environmentally Friendly Feed

in 100% of CPF own farms

2030



Zero Deforestation Sourcing

for wheat, barley and paper of CPF own global operations



Methane Capture (High-Efficiency Biogas System)

100% of CPF own farms in Thailand and Vietnam



No Additional Land Use Change

in 100% of CPF own farms



Coal-Free

In 100% of CPF own global operations



Zero Food Waste

100% of CPF own global operations



Sustainable Packaging

100% of CPF own global operations

2040



Methane Capture

in 100% of CPF own global farms



100% Smart Feedmills

in CPF global operations

2050

Decarbonization

in all of CPF upstream road & sea freight



Decarbonization

of 100% of CPF goods suppliers and capital goods



Renewable Electricity

100% of CPF own global operations



Electric Vehicles

in 100% of CPF own global operations



Scope 1+3 (FLAG)

Scope 1+2+3 (Non-FLAG)

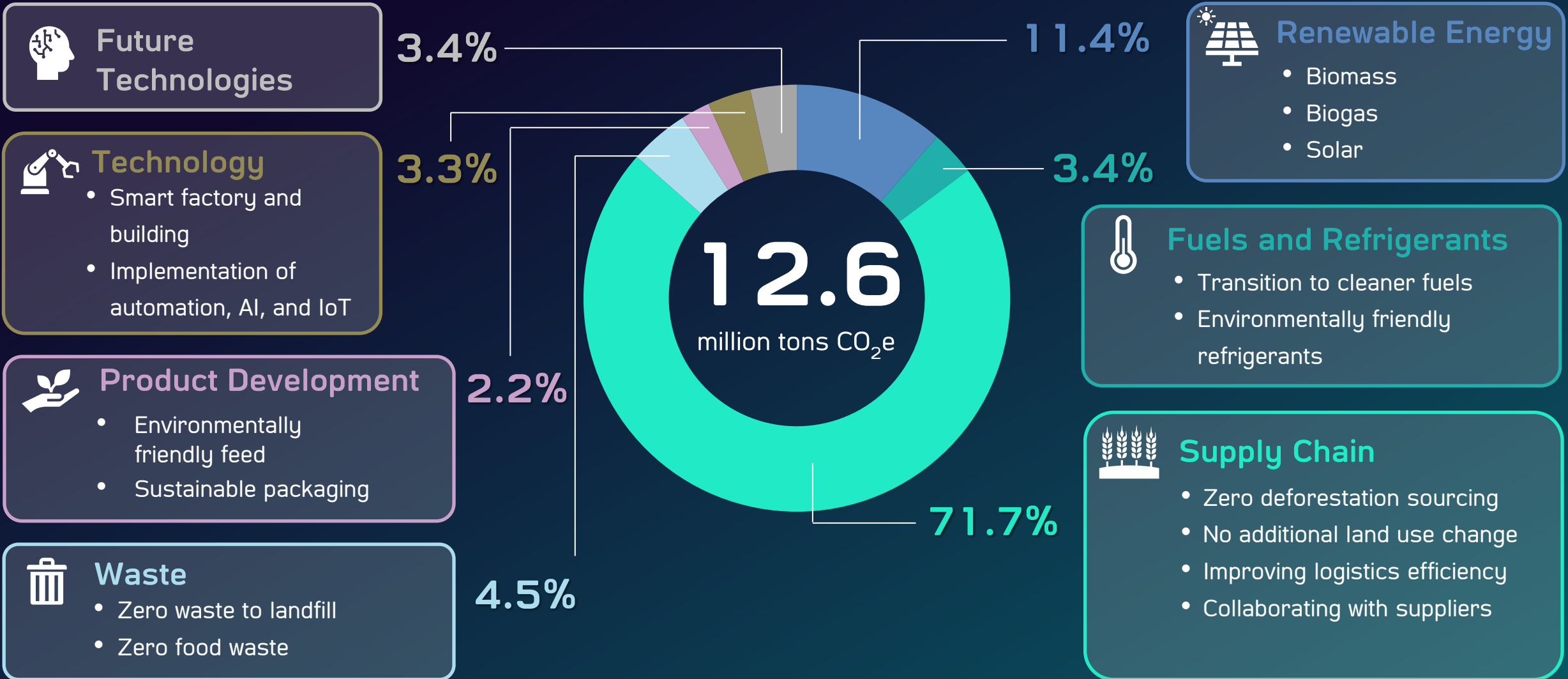
Target

- Non-FLAG: 42%
- FLAG: 30.3%

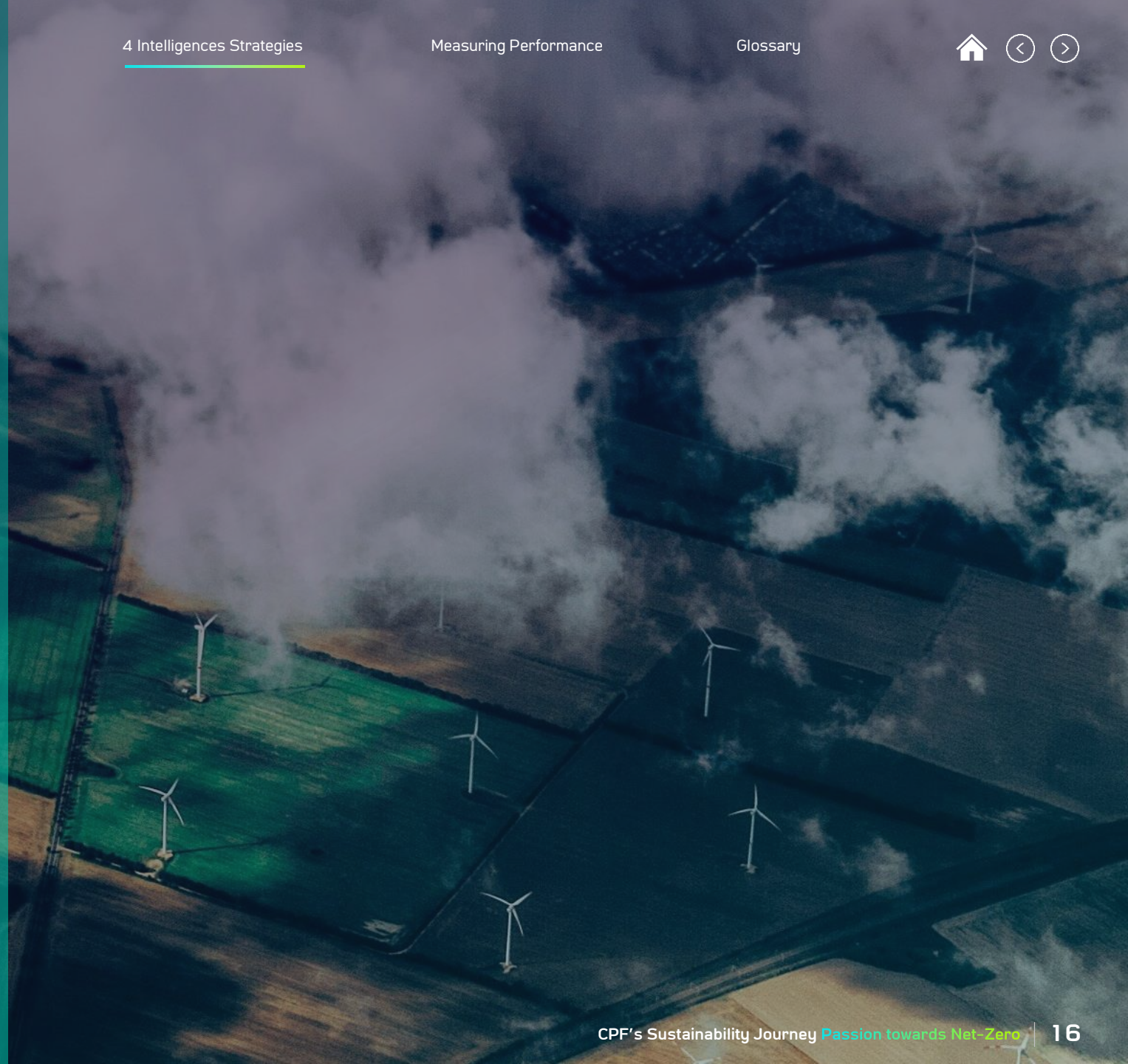
Net-Zero SBT Target

- Non-FLAG: 90%
- FLAG: 72%

In achieving GHG Emissions Reduction Targets by 2030



4 Intelligences Strategies



CPF Net-Zero Strategies Driven by 4 Intelligences



C - Carbon Reduction from Sustainable Sourcing



P - Power Circulation



F - Future Generation



Net-Zero

Network

Driven by 4 Intelligences

Sourcing



Sustainable Traceability



Zero Deforestation Sourcing

Operations



Renewable Energy (biomass energy, biogas and solar power)



Electric Vehicle

Data



Net-Zero at One Click

Intelligent Operations



Smart Production



Smart Building

Communication



Employees



Clients and Consumers



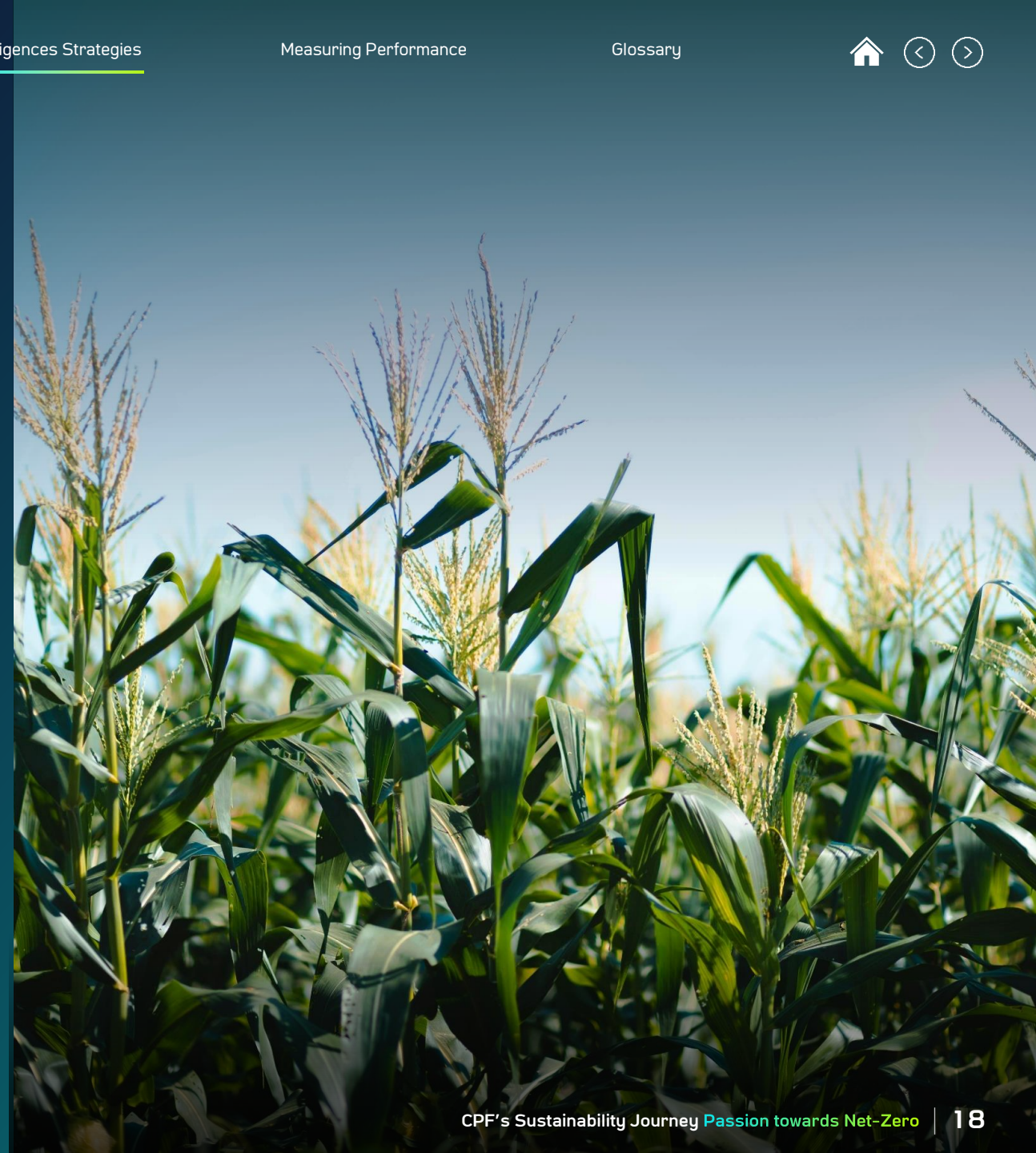
Partners



Network and alliances



C – Carbon Reduction from Sustainable Sourcing



Traceability System

Our Ambitions

- Achieve zero deforestation sourcing goals for corn, soy, palm oil and cassava by 2025
- Expand zero deforestation sourcing towards wheat, barley and paper by 2030
- Create positive impacts on biodiversity by 2030

Key raw materials sourcing



Corn



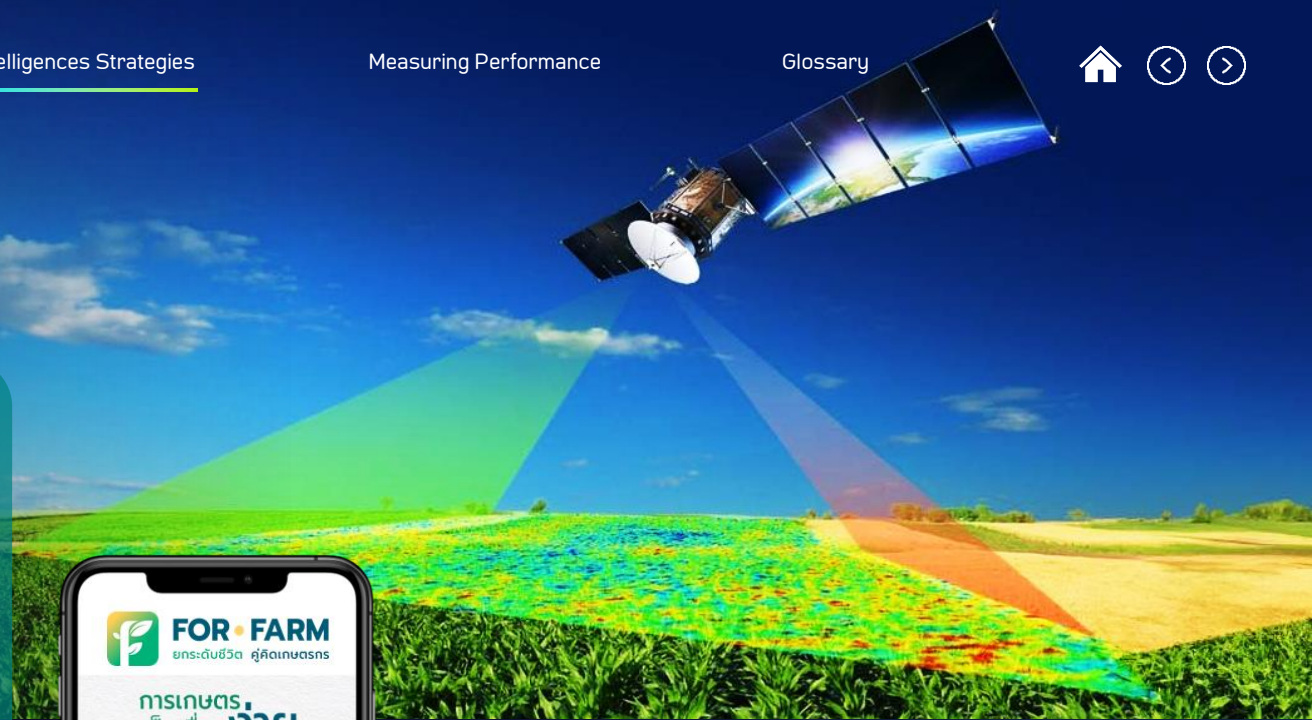
Soy



Palm Oil



Cassava



Operation in Thailand

100%

of corn sourced by CPF comes from deforestation-free areas



P – Power Circulation



Smart Energy

CPF Centralized Monitoring Center



CPF Centralized Monitoring Center

1. Solar Power

Phase 1-4 & With Guff PPA



50 Locations

3. RE100 & EMS Model

Layer farm - Swine farm

1 Locations



2. Wastewater Management

Wastewater, Biogas, BOD Online



1 Locations

4. Energy Consumption

Unit used (kWh)



154 Locations



In 2024:

> 200 data points

Achieve 100% by 2026

Renewable Energy

2024

Ratio of renewable energy consumption

33%

GHG emissions reduced by

710,000 tCO₂e

Equivalent to installing solar power system of

980 MW



65%

Biomass



32%

Biogas



3%

Solar



Since 2022

100%

coal-free

switching to biomass usage in Thailand and Vietnam operations and expanding globally by 2030



100% Renewable Energy Farm (RE100 Farm)

by 2030 in 7 Complex Layer Farms

Pilot Project Complex Layer Farm in Chanthaburi Province

Source of Electricity



70%
Biogas Energy



25%
Solar Power
5%
Renewable Energy Certificate: REC



GHG Emissions Reduction
over **16,500 tCO₂e /year**

*Remark: Purchase RECs to offset external electricity usage for emergency case.

EV Trucks



By 2030

CPF aims to use

> 300 EV trucks

Pilot Project

First EV truck in CPF by CP Foton

More than **4.7** tCO₂e / year
GHG emissions reduced

More than **220** kilometers
average distance per single charge



F- Future Generation



Sustainability at One Click

Connecting value chain-wide data on digital platforms in order to manage and report environmental sustainability information

End-to-end Sustainability Modules

- EM – Environmental Management
- SFM – Sustainability Footprint Management
- SCT – Sustainability Control Tower
- SAC – Sustainability Analytics Cloud

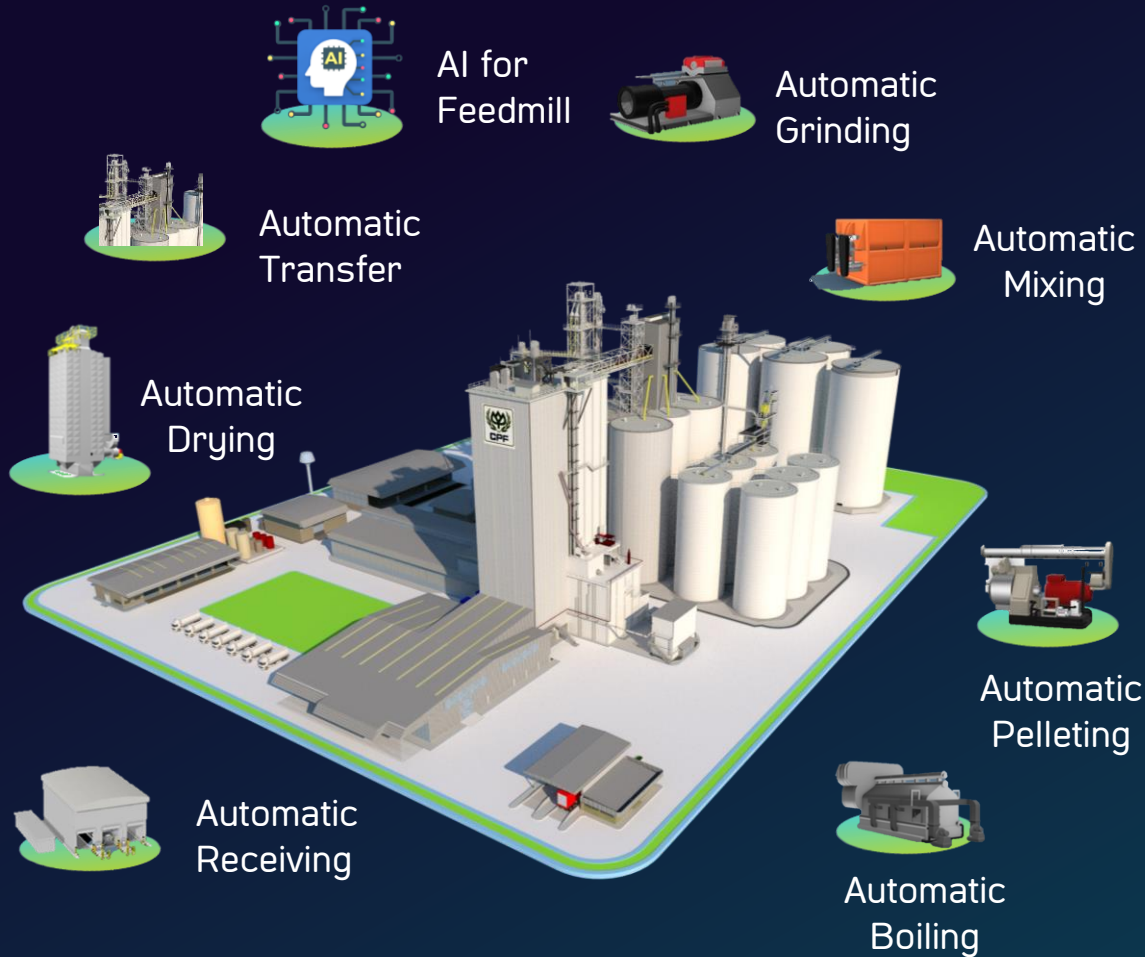


Net-Zero Intelligence Platform

The world's first company to implement SAP Sustainability solutions for real-time record, analysis, and report of carbon emissions.



Smart Feedmill



Machine to Machine : Smart Boiler

The program controls smart boilers which produce steam of sufficient quality and volume necessary to the production. It is controlled by AI which communicates Machine to Machine to maximize efficient energy use.



- Improved livestock feed quality
- Enhanced production efficiency

- Reduced production costs
- Reduced waste
- Reduced electricity consumption
- Minimized workload

Reduce energy use

25% per ton of feed

Smart Factory

Concept :

All that are visible are manageable

Use of Visualization Technology

Production Process

- Increase efficiency
- Reduce idle time
- Reduce GHG emissions



Operational Data Visualization : MES

(Manufacturing Execution System)

The solution software connects data from equipment, machines and organization-level application which allows users to see overall production and helps increasing efficiency and control the entire production.



On-Floor Management :

Edge AI & Machine Learning
(Manufacturing Execution)

The machine system which uses cameras to process picture data and control operations to enhance production efficiency.

Smart Factory and Building

Building Information Modeling (BIM) for design and construction

Digital Twin for building operations and management

Augmented Reality (AR/VR) for buildings audit





- Reduce GHG emissions
- Reduce expenditure



- Improve indoor environmental quality

Smart Building

Green Building



Refrigerants Usage Measure



Limit Refrigerants for Business Operations

According to Kyoto Protocol to the United Nations Framework Convention of Climate Change



Carbon Dioxide



Ammonia



Hydrocarbon



HFOs and certain HFC

Environmentally Friendly Construction Materials

- Low carbon materials
- Environmentally friendly refrigerants
- Low Volatile Organic Compounds (Low VOCs) materials

Energy Efficient Building



Electricity reduction

35%



Water reduction

45%

Hygiene and Safety

- Interior air quality
- Sufficient lighting
- Increasing green areas

Reduce GHG Emissions > 6,000 tCO₂e

Smart Building 7 Green Building Projects



Khon Kaen Office Building



Si Sa Ket Swine Slaughtering Plant



Samut Prakan Laboratory



Nong Chok Center of Engineering Excellence



Nakhon Ratchasima 5 Star Factory



Lopburi Swine Slaughtering and Processing Plant



Phanom Sarakham Duck Slaughtering Plant

Upcycling Products from Plastic Waste

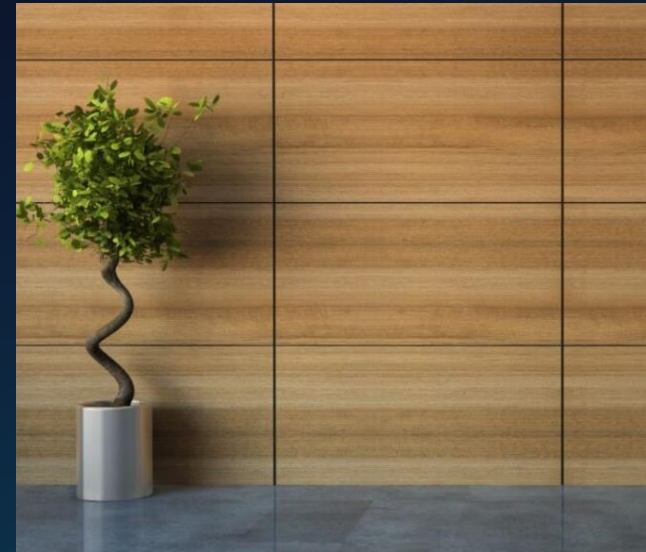
upcycling plastic waste from production processes into products such as furniture, decorative panels, and restroom partitions.

Eco-Friendly Plastic Roads

A pilot project utilizing plastic as a substitute for asphalt at the Center of Engineering Excellence.



Furniture



Decorative Panels



Restroom Partitions



Extruded Plastic Sheets

Net-Zero

Network



Employee Engagement

Net-Zero SBT 101

The course aims to build basic understandings of our Net-Zero journey to create awareness among all our employees.

100%

of Thailand's office employees completed courses in April 2024 and overseas expansion to achieve 100% by 2030.



Supplier Engagement

SMEx

Enhance our SMEs partners' capabilities through seminars and excursions in

- Increasing production efficiency according to Lean Six Sigma,
- Resources and energy management,
- GHG emissions reduction,
- Cost reduction,

We are committed to resonate sustainability-oriented global trades with over 100 partner companies.



Announcement of Collaboration to Enhance Personnel and Organizational Capabilities

in Climate Change and Environmental Management

Between the Faculty of Engineering, Chulalongkorn University, Department of Climate Change and Environment, Carbon Institute for Sustainability and Partner Networks



Partner for GHG Reduction

Sustainable Packaging

CPF designs and develops environmentally friendly food packaging to encourage reusing, recycling and reducing GHG emissions.

In 2024
(Thailand Operations)

85.1% ⁽¹⁾

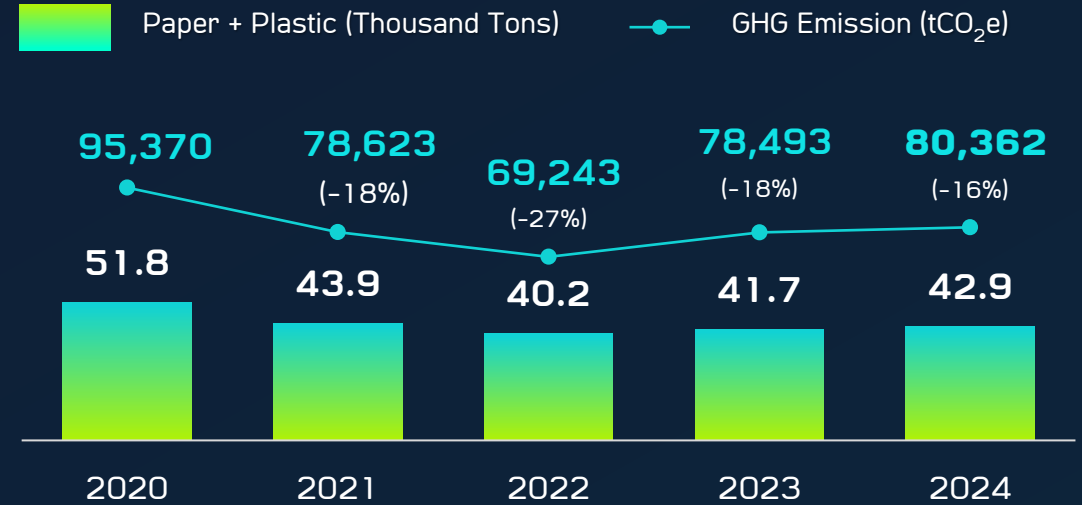
of our plastic packaging for food products is reusable, recyclable and composable.



(1) Not including mixed plastic and Alufoil

*The 2024 data will be revised to cover CPF own global operation by June 2025

Plastic and Paper Food Packaging (Thailand Operations)



Plastic Food Packaging (Thailand Operations)

20,703 tons



0.16%
Reusable



84.79%
Recyclable



0.14%
Composable



14.91%
Hard to Recycle

Partner for GHG Reduction

Converting used packaging to energy

Collaborating with Boehringer Ingelheim (Thailand) to convert used packaging to Refuse Derived Fuel (RDF)

In collaboration with



GHG Emissions Reduction over **2.4** tons CO₂e / ton of Packaging



Communication with Clients and Consumers

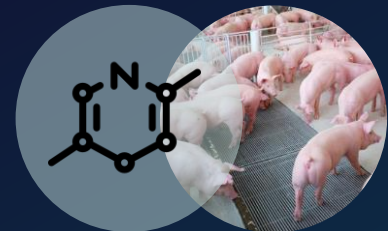
Environmentally Friendly Livestock Feed

Protein-balanced and age-appropriate enzyme-selected livestock feeds for swine and layer chicken

- Increase food digestion and nutrient absorption
- Contribute to livestock’s hygienic growth and welfare
- Reduce excess nitrogen from livestock manure which affects GHG emissions



Excess Nitrogen Reduction



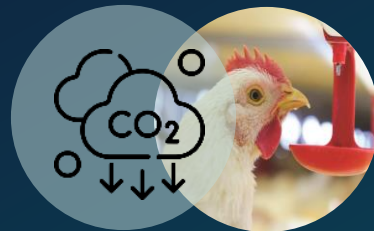
20-30%

From swine manure

12-13%

From layer chicken manure

GHG Emission Reduction



74,700

tCO₂e

We control portion and quality of livestock feeds to ensure that all animals receive sufficient and appropriate amount of nutrient.



Swine



Duck



Layer Chicken

Communication with Clients and Consumers



Eco-Friendly Food

CPF is committed to producing environmentally certified green products.

2024 Performance



890 Products

have undergone the carbon footprint assessments and certified with the Carbon Footprint Label by Thailand Greenhouse Gas Management Organization (Public Organization) or TGO



88 Products

are classified as low-carbon products with the Carbon Footprint Reduction Label verified by TGO

*Remark: Information as of 31st December 2024



Our Products which Emits GHG Below Average*



Fresh Chicken Meat

below average

50%



Chicken Eggs

below average

30%



Fresh Pork

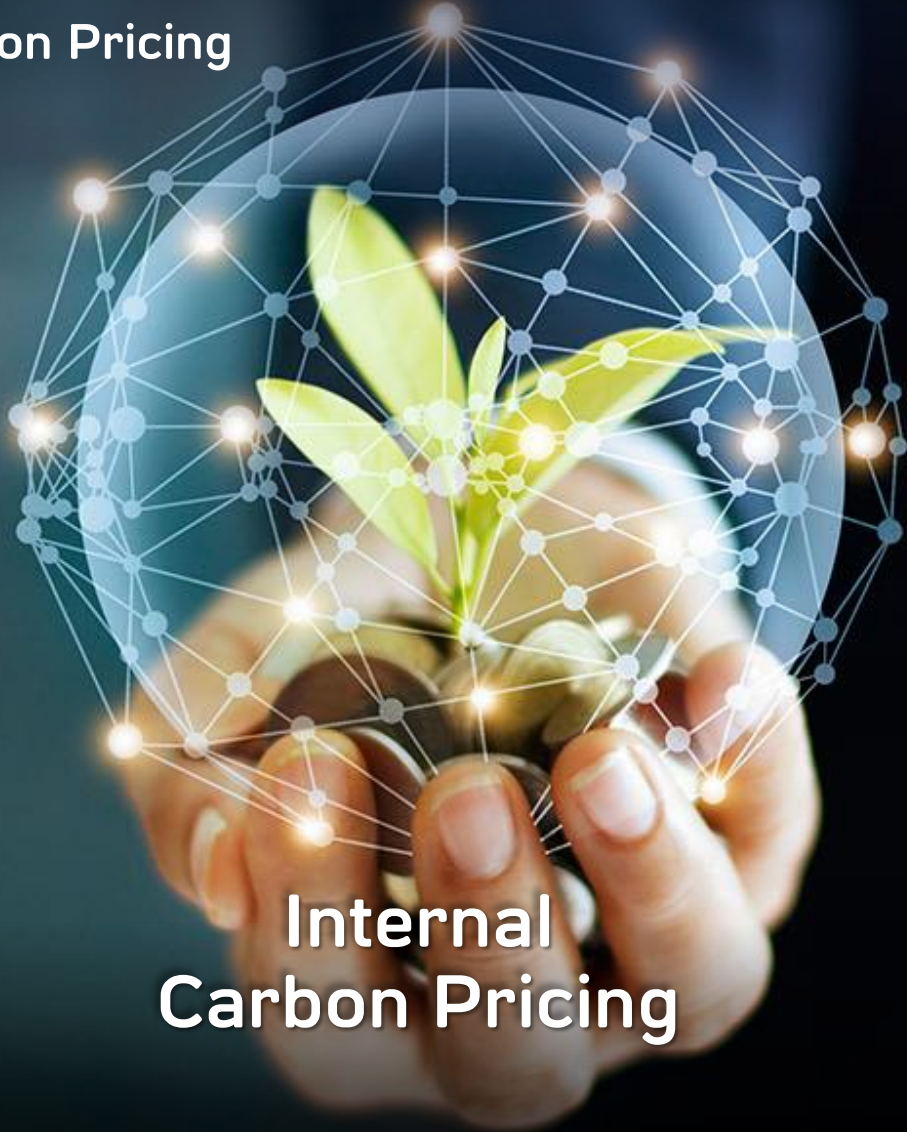
below average

13%

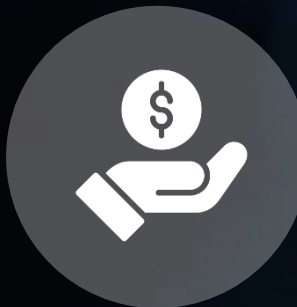
*Remark: Average of each product's GHG emissions in Thailand

Cooperation with Network and Alliances

Internal Carbon Pricing



Internal Carbon Pricing



- Internal Carbon Pricing in Preparation for EU CBAM
- Covering both Non-FLAG and FLAG GHG
- Taking CPF global investment decisions into account

Cooperation with Network and Alliances

Safety and Environment



มหาวิทยาลัยมหิดล
คณะสาธารณสุขศาสตร์



Thailand
Supply Chain
Network



Technology and Efficiency Enhancement



CP FOTON

SAP
Sustainability



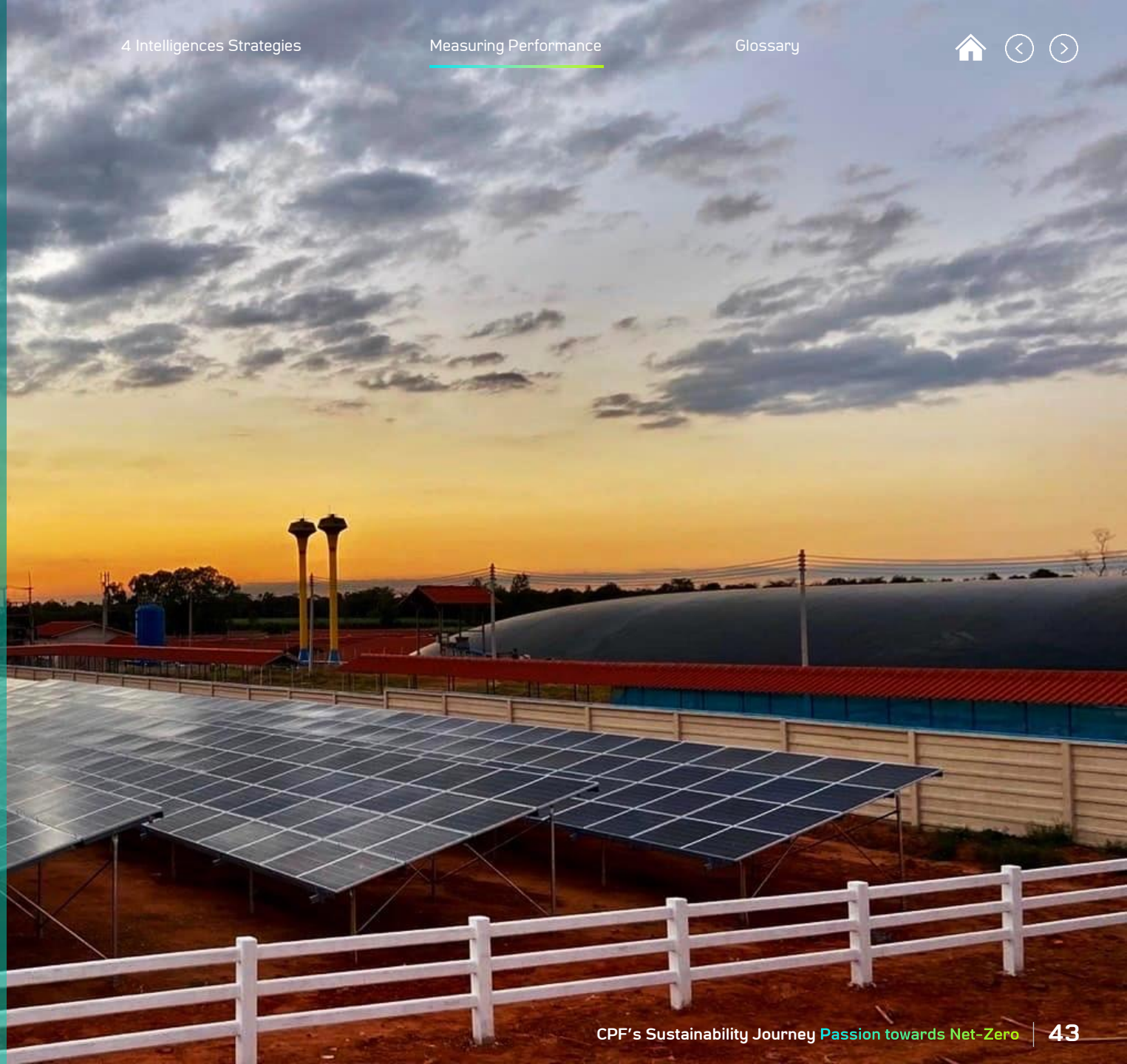
TOYOTA



Education



Measuring Performance

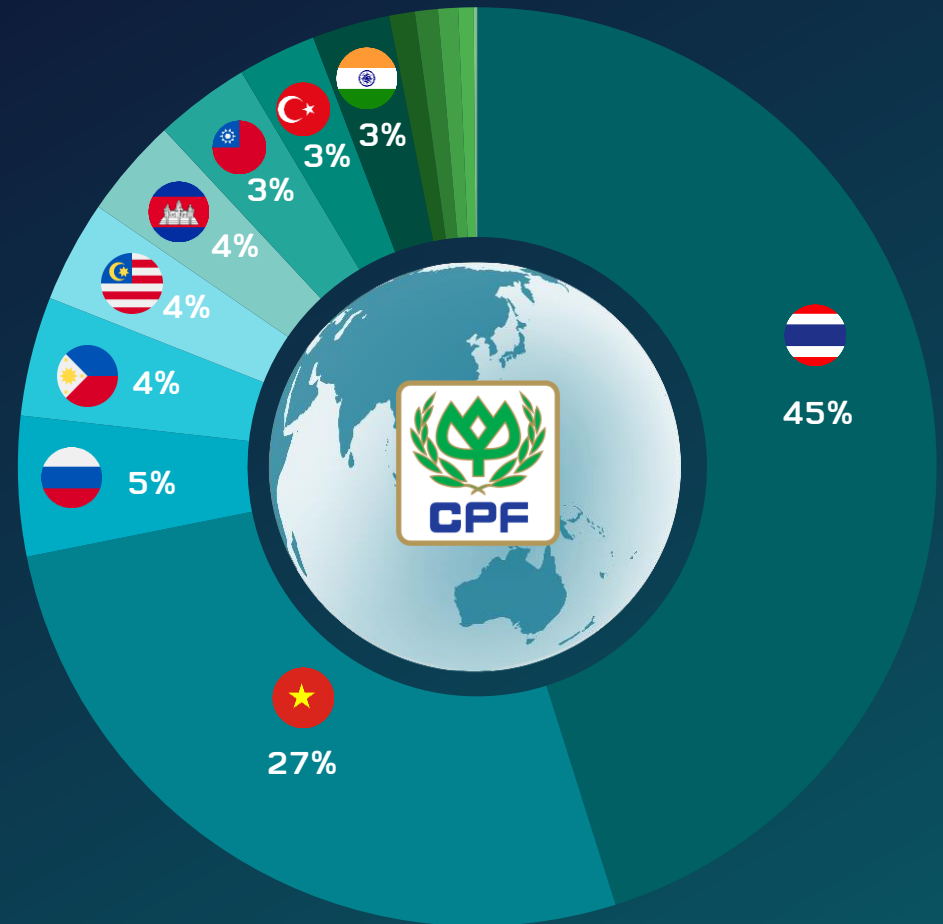


CPF's Total GHG Emissions Across All Scopes

Unit : million tons CO₂e

	2020 Base year	2023	2023 Compared with base year
Thailand	14.51	17.76	+3.25
Vietnam	9.91	10.52	+0.61
Turkiye	2.09	1.09	-1.00
Malaysia	1.67	1.41	-0.26
Russia	1.61	1.94	+0.33
India	1.59	1.08	-0.51
Philippines	1.26	1.66	+0.4
Taiwan	1.16	1.32	+0.16
Cambodia	0.9	1.38	+0.48
United States	0.68	0.21	-0.47
China	0.58	0.35	-0.23
Laos	0.31	0.32	+0.01
United Kingdom	0.09	0.28	+0.19
Sri Lanka	0.02	0.005	-0.015
Belgium	0.003	0.01	+0.007
Total	36.38	39.34	+2.95

Proportion of GHG Emissions by Country in 2023

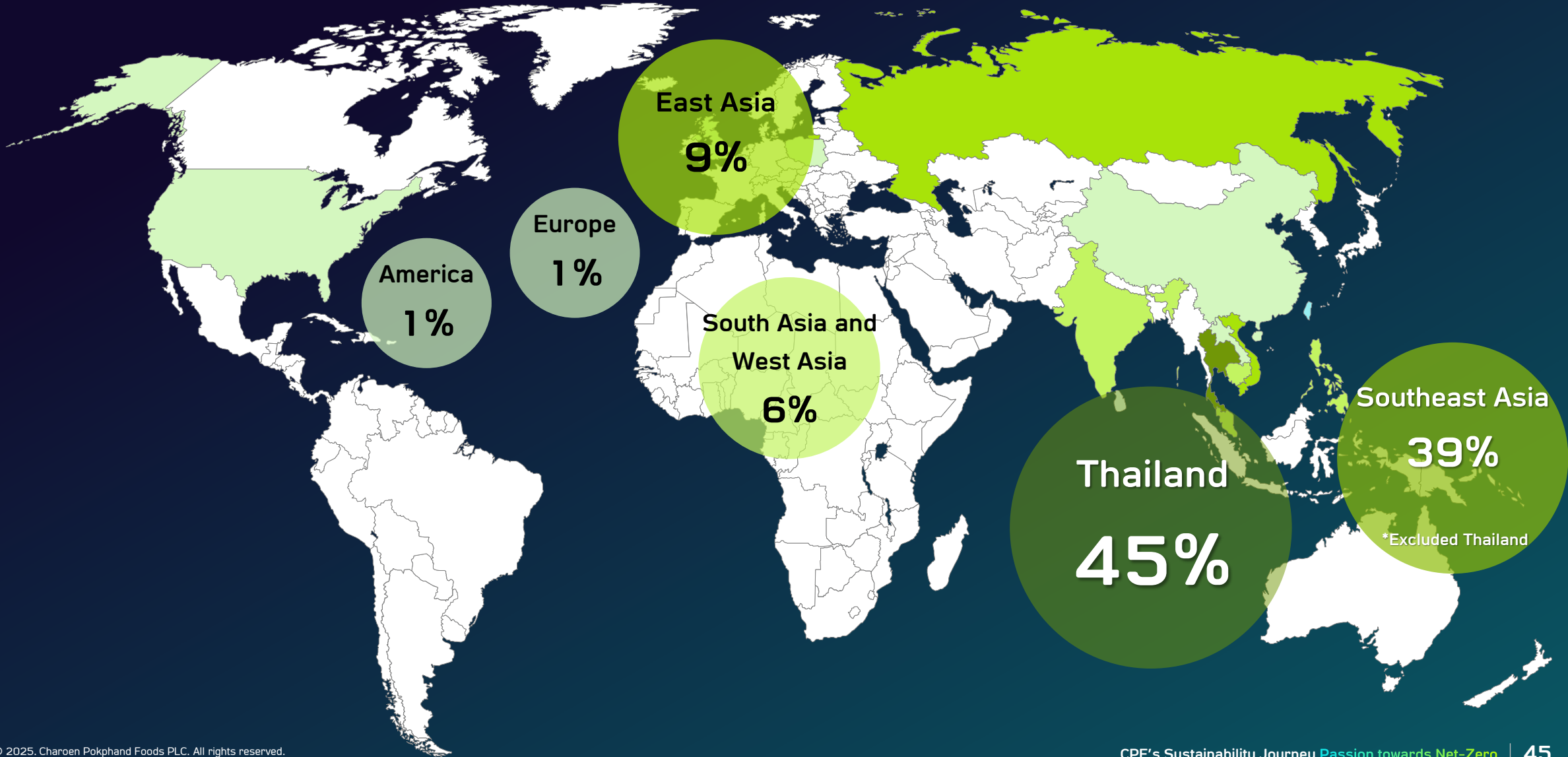


Proportion of CPF's GHG Emissions in 2023 by Country Zone

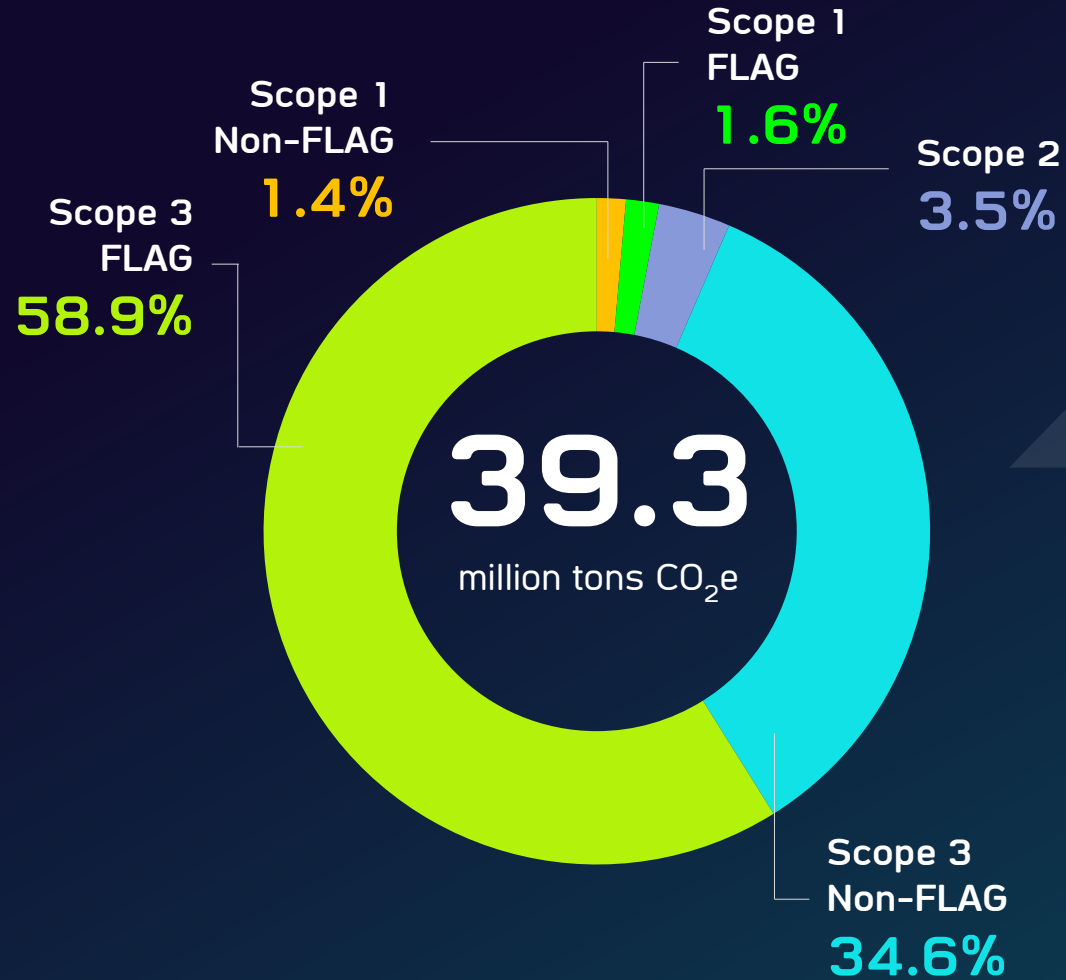
High



Low

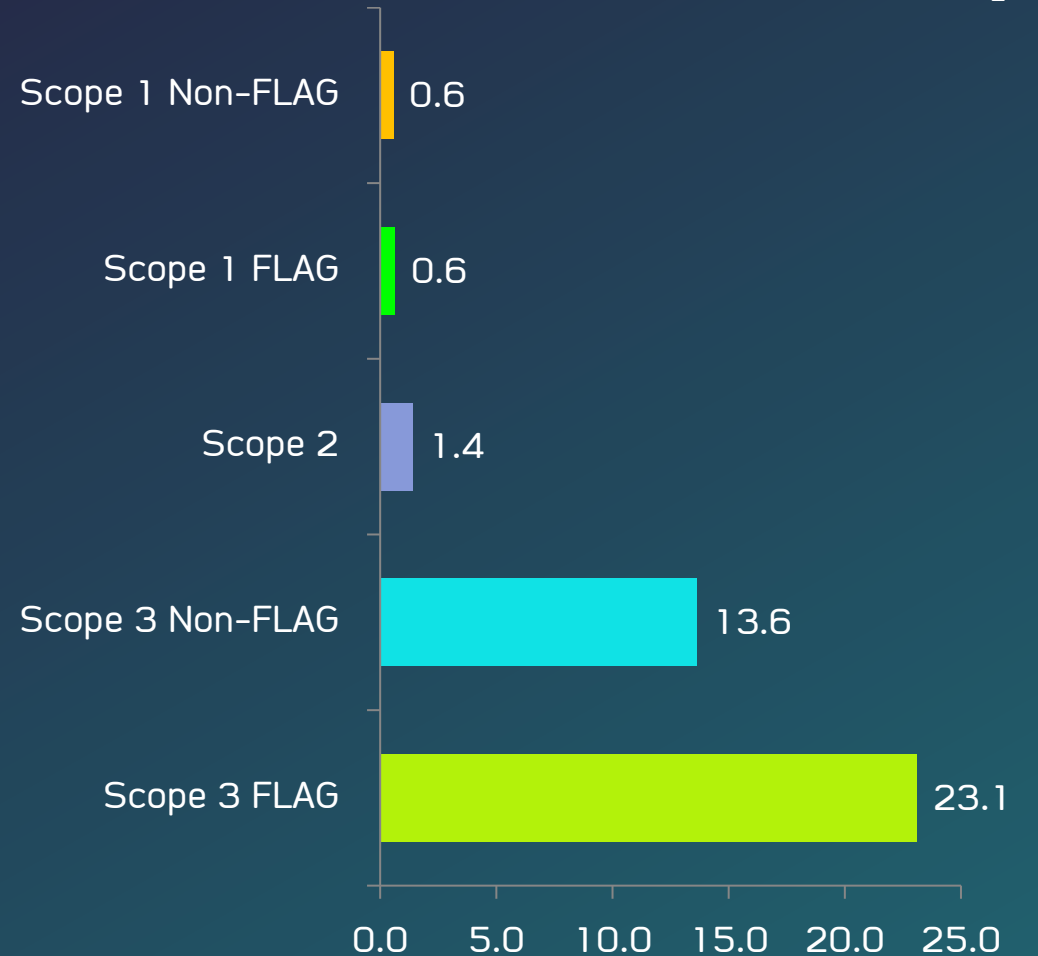


CPF's Global GHG Emissions in 2023



GHG Emissions by Scope

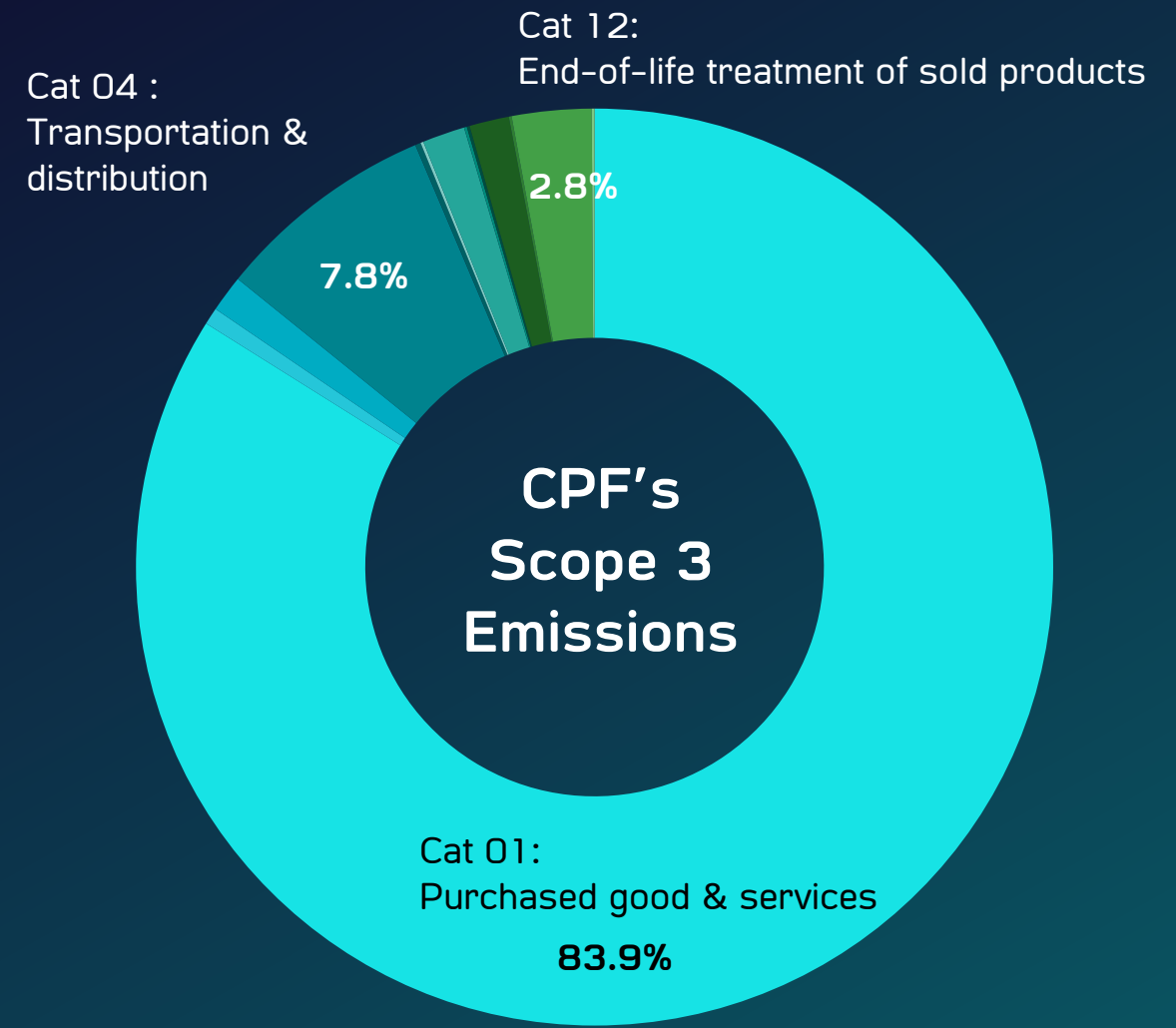
Unit : million tons CO₂e



CPF's Global Scope 3 GHG Emissions in 2023

% Compared to Scope 3

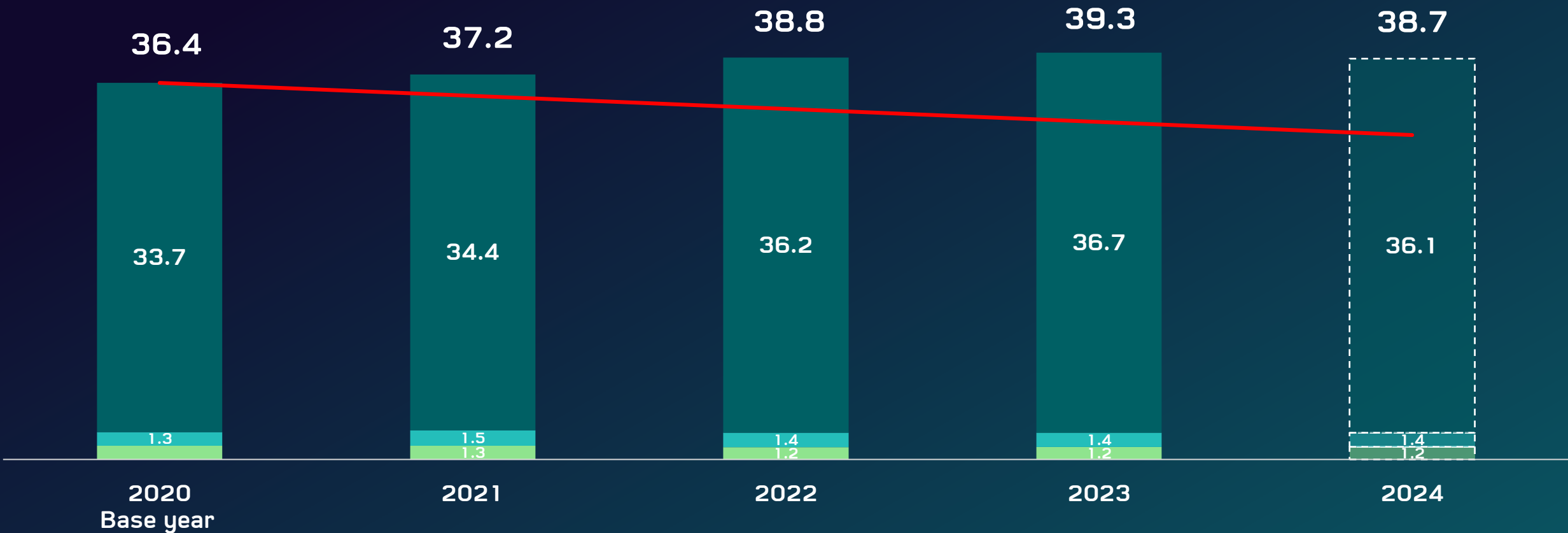
Scope 3 Emissions	100%
● Cat 01: Purchased good & services	84.0%
● Cat 02: Capital goods	0.6%
● Cat 03: Fuel & energy related (Excluded from Scope 1 and 2)	1.3%
● Cat 04: Transportation & distribution	7.8%
● Cat 05: Waste from operation	0.2%
● Cat 06: Business travel	0.1%
● Cat 07: Employee commuting	1.5%
● Cat 08: Leased assets	0.1%
● Cat 09: Transportation & distribution	0.1%
● Cat 10: Processing of sold products	1.4%
● Cat 11: Use of sold products	0.1%
● Cat 12: End-of-life treatment of sold products	2.8%
● Cat 13: Leased assets	0.0%
● Cat 14: Franchises	0.1%



Remark: Cat15: Investments are not within the scope of SBT's near-term target.

CPF's Global GHG Emissions Across All Scopes (2020-2024)

Unit : million tons CO₂e



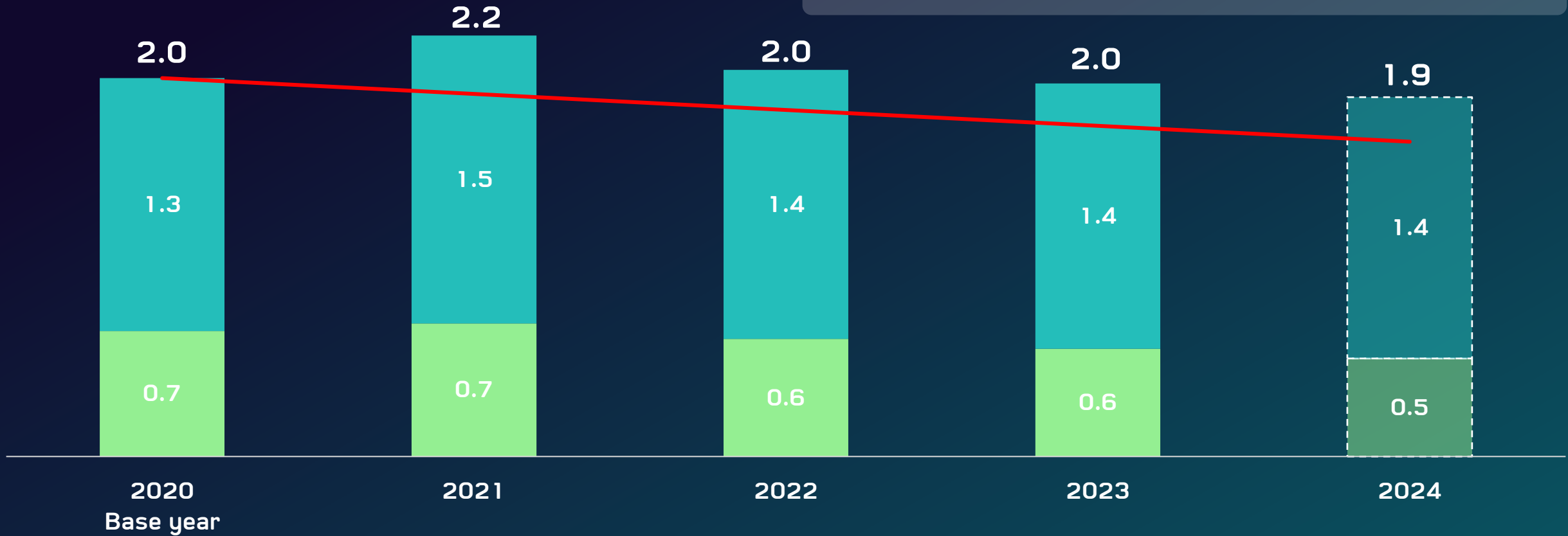
*Data collection and calculation methods have been adjusted since 2022 onwards

**The 2024 data will be revised by June 2025

CPF's Global Scope 1 Non-FLAG and Scope 2 GHG Emissions (2020-2024)

Unit : million tons CO₂e

- Scope 1 GHG Emissions
- Scope 2 GHG Emissions
- - - Forecasted GHG Emissions
- Scope 1 and 2 SBT Target



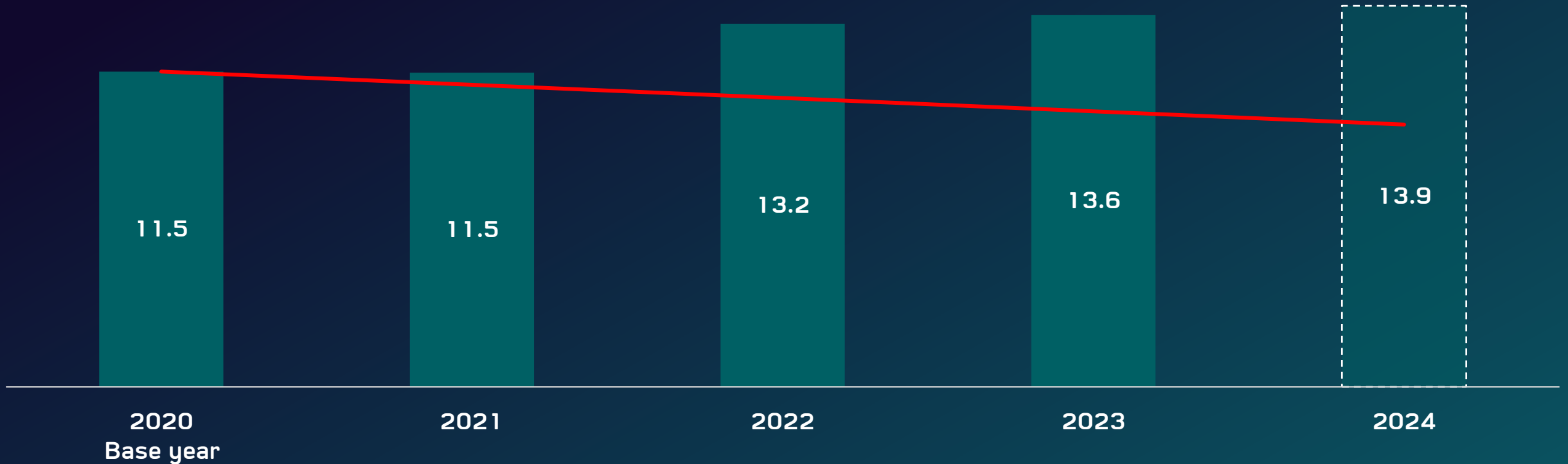
*Data collection and calculation methods have been adjusted since 2022 onwards

**The 2024 data will be revised by June 2025

CPF's Global Scope 3 Non-FLAG GHG Emissions (2020-2024)

Unit : million tons CO₂e

● Scope 3 Non-FLAG GHG Emissions - - - Forecasted GHG Emissions — Scope 3 Non-FLAG SBT Target



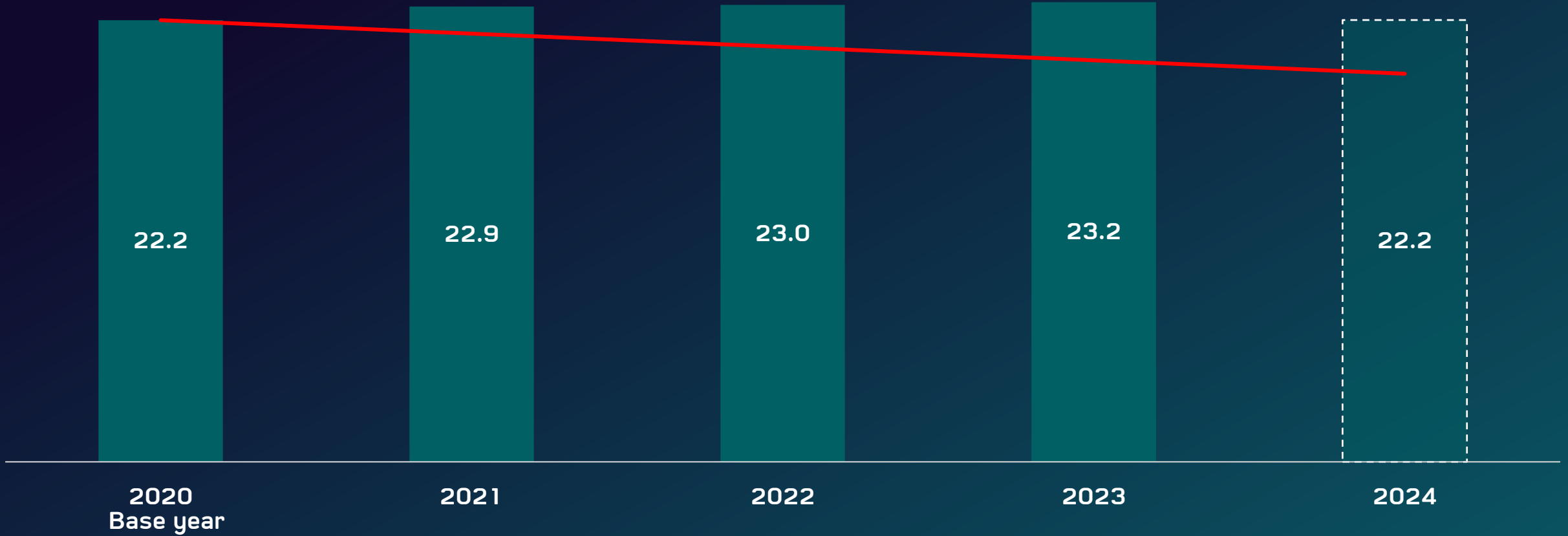
*Data collection and calculation methods have been adjusted since 2022 onwards

**The 2024 data will be revised by June 2025

CPF's Global Scope 3 FLAG GHG Emissions (2020-2024)

Unit : million tons CO₂e

● Scope 3 FLAG GHG Emissions
 Forecasted GHG Emissions
 Scope 3 FLAG SBT Target



*Data collection and calculation methods have been adjusted since 2022 onwards

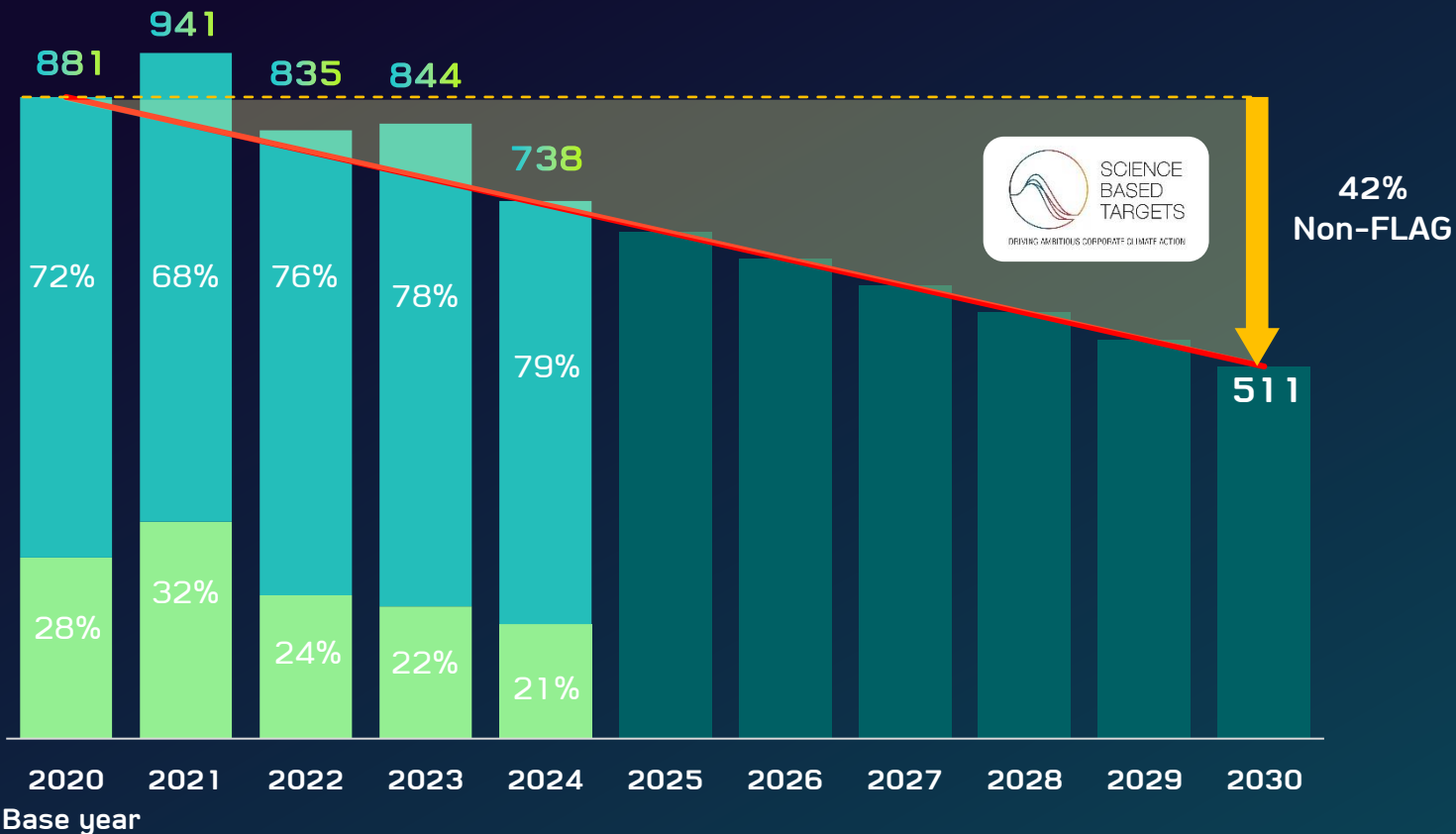
**The 2024 data will be revised by June 2025

Copyright © 2025. Charoen Pokphand Foods PLC. All rights reserved.

CPF's Thailand Scope 1 Non-FLAG and Scope 2 GHG Emissions (2020-2024)

● Scope 1 GHG Emissions ● Scope 2 GHG Emissions — SBT Target

Unit : thousand tons CO₂e



GHG Reduction Through:

Scope 1:

- 100% coal-free by switching to biomass usage
- Enhancing machine efficiency.

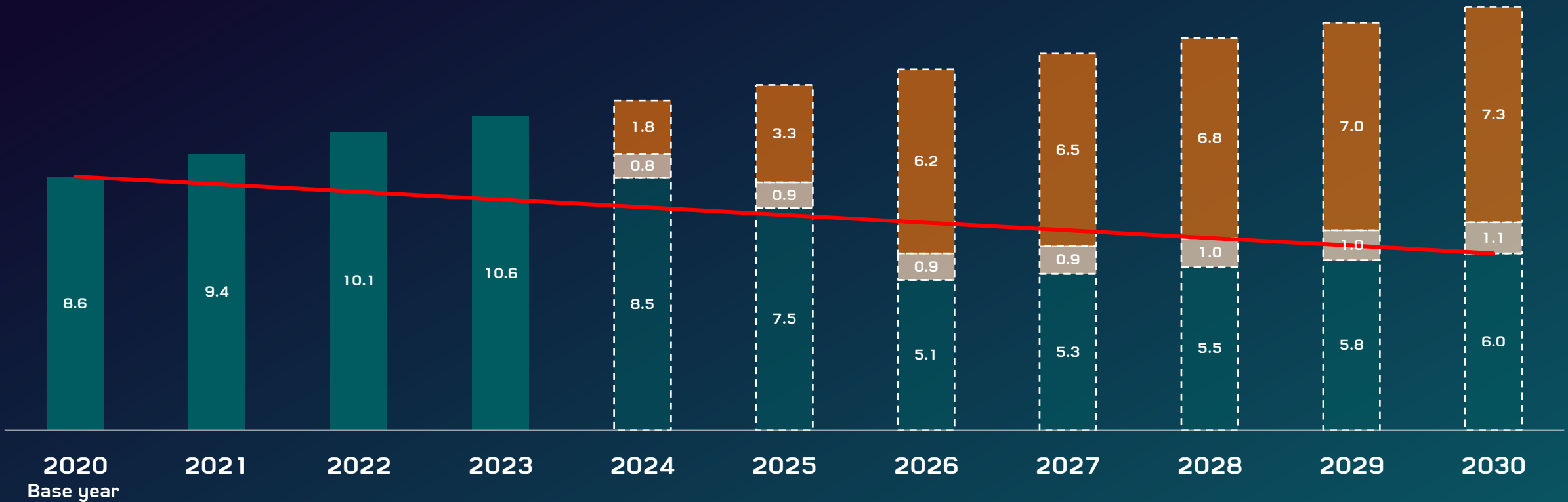
Scope 2:

- Expanding the use of electricity from solar power.

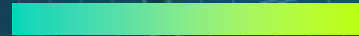
CPF's Thailand Scope 3 FLAG GHG Emissions (2020-2024)

- Scope 3 FLAG GHG Emissions
- Scope 3 FLAG SBT Target
- - - Forecasted GHG Emissions
- GHG Emissions reduced through Traceability to the cultivation fields of key raw materials using the Net-Zero Intelligence Platform
- GHG Emissions reduced by other methods

Unit : million tons CO₂e



Glossary



Term	Details	References
Artificial Intelligence (AI)	<ul style="list-style-type: none"> Artificial Intelligence (AI) is the science and engineering of making intelligent machines, especially intelligent computer programs. AI algorithms seek to create expert systems which make predictions or classifications based on input data. 	IBM
Augmented Reality/Virtual Reality (AR/VR)	<ul style="list-style-type: none"> Immersive technologies that blur the lines between the physical and digital worlds. They offer unique experiences by overlaying digital elements onto the real world or transporting users into entirely computer-generated environments. 	IEEE
BAU	<ul style="list-style-type: none"> Business as usual (BAU) refers to the usual operations of a business 	
Blockchain	<ul style="list-style-type: none"> Blockchain is a shared, immutable ledger that facilitates the process of recording transactions and tracking assets in a business network. The traceability system with Blockchain Traceability technology is widely accepted in numerous industries including banking, sourcing and procurement, and supply chain. 	CPF
Building Information Modeling (BIM)	<ul style="list-style-type: none"> Building Information Modeling (BIM) involves the creation and management of data for constructing buildings. Through the BIM platform, structural data is integrated to create intelligent models that represent information throughout the building's lifecycle, from planning and design to construction and operation. 	Autodesk
Digital Twin	<ul style="list-style-type: none"> A digital twin is a virtual simulation designed to accurately reflect the physical structure, with real-time data updates. It simulates machine learning processes and provides reasoning to assist in making informed decisions. 	IBM
Electric vehicle (EV)	<ul style="list-style-type: none"> Electric vehicle (EV) has an electric motor instead of an internal combustion engine. 	U.S. Department of Energy
Environmental Management (EM)	<ul style="list-style-type: none"> A cloud solution with integrated waste management, a flexible and auditable emissions calculator, and real-time analytical tools for ESG reporting. 	SAP

Term	Details	References
EU CBAM	<ul style="list-style-type: none"> A carbon tariff on certain carbon-intensive goods imported into the European Union. It aims to prevent carbon leakage and ensure a level playing field for EU producers by ensuring that imported products face a similar carbon price as those produced domestically. 	European Commission
FLAG	<ul style="list-style-type: none"> Forest, Land and Agriculture (FLAG) is the world's first standard method for companies in land-intensive sectors to set science-based targets that include land-based emission reductions and removals 	SBTi
GHG	<ul style="list-style-type: none"> Greenhouse gas (GHG) based on the corporate standard, Greenhouse Gas Protocol, covers the accounting and reporting of seven greenhouse gases that are carbon dioxide (CO₂), methane (CH₄), nitrous oxide (N₂O), hydrofluorocarbons (HFCs), perfluorocarbons (PCFs), sulphur hexafluoride (SF₆) and nitrogen trifluoride (NF₃). 	Greenhouse Gas Protocol
Global Reporting Initiative (GRI)	<ul style="list-style-type: none"> Global Reporting Initiative is a global leader for sustainability reporting standards (GRI). 	GRI
Long-term	<ul style="list-style-type: none"> Long term targets cover more than 10 years from the date of submission. CPF committed the long-term targets by 2050. 	SBTi
Manufacturing Execution System (MES)	<ul style="list-style-type: none"> Tracks and controls production processes, optimizing efficiency and data-driven decision-making. It is essential for regulated industries ensuring compliance, traceability, and product recall capability. 	SAP
Near-term	<ul style="list-style-type: none"> Near-term targets must cover a minimum of 5 years and a maximum of 10 years from the date the target is submitted to the SBTi for validation. Since CPF submitted the base year of 2020, our near-term targets are by 2030. 	SBTi
Non-FLAG	<ul style="list-style-type: none"> "Non-FLAG" target covers all of the company's other fossil-based emissions 	South Pole

คำย่อ	รายละเอียด	แหล่งข้อมูลอ้างอิง
RE100	<ul style="list-style-type: none"> The use of 100% electricity from renewable energy sources. 	CLIMATE GROUP RE100
Refuse Derived Fuel (RDF)	<ul style="list-style-type: none"> A type of fuel obtained by modifying both the chemical and physical properties of waste materials. 	Willshee's
Renewable Energy Certificate (REC)	<ul style="list-style-type: none"> A certificate that represents the generation of 1 megawatt-hour of clean energy. 	The International REC Standard
SAP Analytics Cloud (SAC)	<ul style="list-style-type: none"> Combines AI-driven insights, mission-critical analytics, and unified planning to automate reporting, enhance decision-making, and integrate financial, supply chain, and operational planning. 	SAP
SBT	<ul style="list-style-type: none"> Science Based Targets 	
SBTi	<ul style="list-style-type: none"> The Science Based Targets initiative (SBTi) drives ambitious climate action in the private sector by enabling organizations to set science-based emissions reduction targets 	SBTi
Sustainability Footprint Management (SFM)	<ul style="list-style-type: none"> Utilize an ERP-centric cloud solution to measure, manage, and integrate detailed carbon footprint insights into business processes, ensuring transparency and efficiency. 	SAP
Sustainability Control Tower (SCT)	<ul style="list-style-type: none"> Capture actual ESG data, report audit-ready metrics, and act on goals with insights, forecasts, and planning embedded in business processes. 	SAP
TGO	<ul style="list-style-type: none"> Thailand Greenhouse Gas Management Organization 	TGO
The Internet of Things (IoT)	<ul style="list-style-type: none"> The Internet of Things (IoT) refers to a network of physical devices, vehicles, appliances and other physical objects that allows them to collect and share data. 	IBM



Charoen Pokphand Foods Public Company Limited
313 C.P. Tower Building, Silom Road, Bangrak, Bangkok, 10500,
Thailand

Tel : 02 766 8000 Fax : 02 638 2139



<https://www.cpfworldwide.com>

